

NEW Resin Bond Blades

R07 SERIES **BB100**

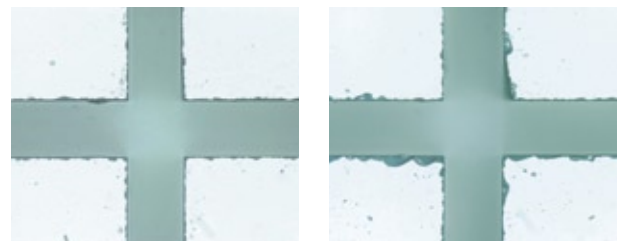
Realizes high grade cutting of hard and brittle materials such as glass



The R07 series BB100 bond realizes high grade processing of hard and brittle materials such as glass, crystal and ceramics.

The BB100 bond is a new resin bond in the R07 series that realizes a higher processing quality and was developed for the cutting of hard and brittle materials, such as glass and crystal. This new bond can improve productivity for the cutting of crystal materials by satisfying both high-grade and high-speed processing, which have been conflicting demands until now.

- Realizes high processing quality for the cutting of hard and brittle materials
- High-speed processing of hard and brittle materials is possible



New

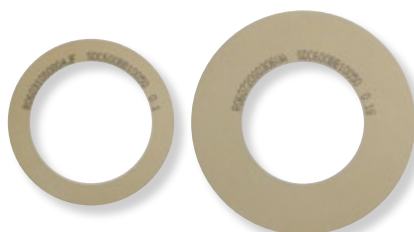
Current

A high grade finished surface is obtainable compared to current resin bond blades.

Workpiece : Glass 0.4 mmt
 Blade : New R07-SDC600-BB100-75
 Current P1A851 SD600R10MB01

Spindle rpm : 15,000 rpm

Feed speed : 10 mm/s



Applications

Glass, crystal, ceramic, etc.



ISO 9001
JQA-0954

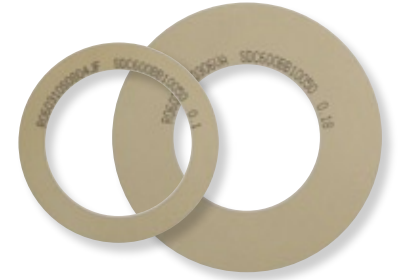
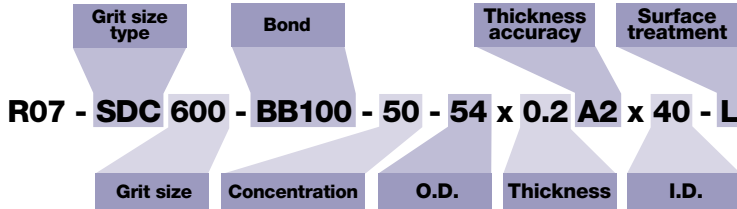


REGISTERED ORGANIZATION
No. E892-ISO 14001

Specifications

NEW Resin Bond Blades

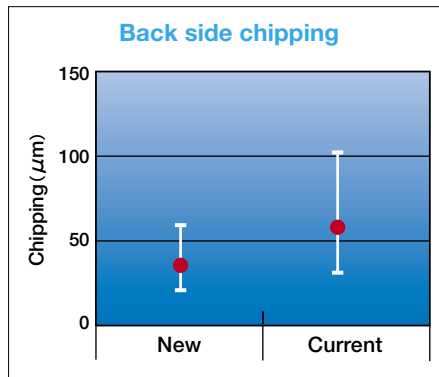
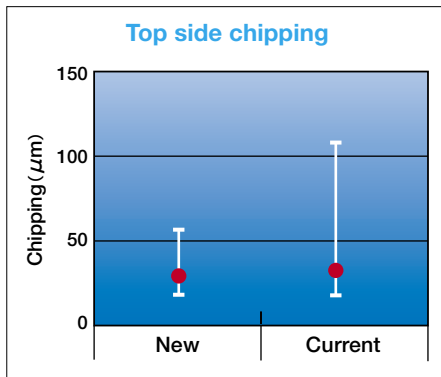
R07 SERIES **BB100**



Experimental Data

Glass cutting process

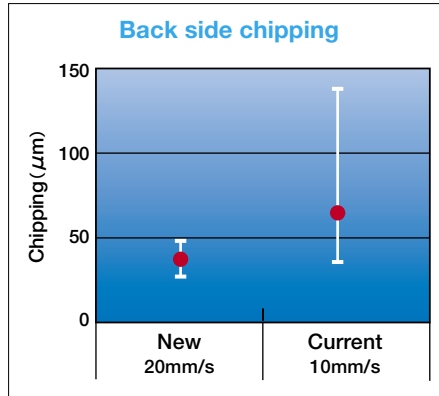
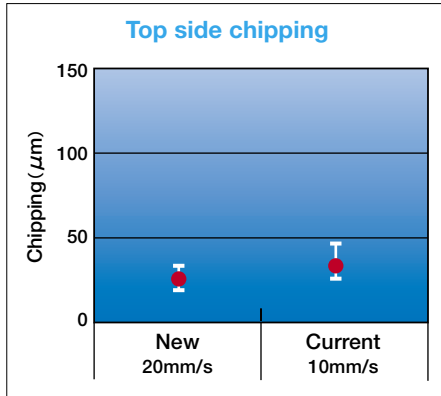
For glass processing, the R07 series BB100 bond achieves less chipping than current blades for both the front side and backside.



Workpiece : Glass 0.4 mm
 Blade : New R07-SDC600-BB100-75
 Current P1A851 SD600R10MB01
 Spindle rpm : 15,000 rpm
 Feed speed : 10 mm/s

Crystal cutting process

Even under the condition of twice the current blade's processing speed, the BB100 bond achieves less chipping for both the front side and backside.



Workpiece : Crystal 0.4 mm
 Blade : New R07-SDC600-BB100-75
 Current P1A851 SD400R10MB01
 Spindle rpm : 25,000 rpm

When ordering

Please contact a Disco representative with your product needs such as type, thickness, outer and inner diameter, and quantity.

When you place the first order with us, please explain application information such as materials to cut or grind, sizes, shape, machine, type, and other specification.

We are ready to help you to determine which is our most appropriate product type for your application.

Due to improvements in our products, it is possible that product specifications may be changed without advanced notice. Please confirm the product specifications with a Disco representative.



To use these Disco wheels safely...

Please read carefully and follow the instructions below to prevent any accidents or injuries.

- USE a safety cover (nozzle case, cover), equipped as a standard accessory, to avoid injury.
- DO NOT EXCEED the maximum rpm if it is specified.
- FOLLOW the instruction manual of the machine to mount wheel properly.
- DO NOT DROP OR HIT wheels. This may cause wheel breakage or injury.
- Always CHECK the wheel for chipping or any other wheel damage before starting to use the wheel. DO NOT USE the wheel if there is any damage.
- READ the operation manual of the cutting/ grinding equipment before use.
- DO NOT USE a wheel with a modified or customized equipment.
- DO NOT USE a wheel that has a different size from the one recommended for your machine.
- DO NOT USE a wheel for any other purpose than Grinding, Cutting, or Polishing.
- Always USE water or coolant to prevent wheel breakage.

DISCO



ASIA :
DISCO HI-TEC (SINGAPORE) PTE., LTD.
 Blk 2 Kaki Bukit Ave.1 #03-06/08 Kaki Bukit Industrial Estate Singapore 417938
 Phone: 65-6747-3737 Fax: 65-6745-0266
DISCO HI-TEC (MALAYSIA) SDN. BHD.
 Phone: 60-3-8024-6588 Fax: 60-3-8024-1311
 Penang Regional Office
 Phone: 60-4-644-5502 Fax: 60-4-645-2285
DISCO HI-TEC (THAILAND) CO., LTD.
 Phone: 66-2-618-8441 Fax: 66-2-618-8440
DISCO TECHNOLOGY (SHANGHAI) CO., LTD.
 Area E, 3rd Floor, Building A1 No.381 FuTeXiYi Road, WaigaoQiao Free Trade Zone, Shanghai 200131 P.R. CHINA
 Phone: 86-21-58662516 Fax: 86-21-58662517
 Tianjin Service & Technical Support Center
 Phone: 86-022-24381973 Fax: 86-022-24381637
 Dongguan Service & Technical Support Center
 Phone: 86-769-86334981 Fax: 86-769-86334559
 Suzhou Office
 Phone: 86-512-67629081 Fax: 86-512-67629082

DISCO CORPORATION

13-11 Omori-Kita 2-chome, Ota-ku, Tokyo 143-8580, Japan
 Tel:03-4590-1100 Fax:03-4590-1075 • www.disco.co.jp

Chengdu Office
 Phone: 86-28-86528592 Fax: 86-28-86528591

ASIA AGENT :
New Tronics Co., Ltd.
 Flat F, 11th Floor, Valiant Ind. Bldg. 2-12 Au Pui Wan Street, Fotan Shantin, N.T. HONG KONG
 Phone: 852-26871431 Fax: 852-26874283
Happy Pole, Ltd.
 8F-1, No.41 Section 2, Roosevelt Road Taipei, Taiwan R.O.C.
 Phone: 886-2-23980651 Fax: 886-2-23943943

Aurotech Corporation
 2021 Buencamino Street Alabang, Muntinlupa PHILIPPINES
 Phone: 63-2-809-0155 Fax: 63-2-807-7419
DHK Solution Corporation
 13F, Sanhak Jaedan Building 1337-31, Seocho-dong, Seocho-gu, Seoul, Korea
 Phone: 82-2-3415-1122 Fax: 82-2-3415-1441

U.S.A. :
DISCO HI-TEC AMERICA, INC.
 3270 Scott Blvd. Santa Clara, CA 95054-3011 U.S.A.
 Phone: 1-408-987-3776 Fax: 1-408-987-3785

Eastern Regional Sales & Service Office
 Phone: 1-603-658-9019 Fax: 1-603-658-9018
 Southeastern Regional Sales & Service Office
 Phone: 1-919-468-6003 Fax: 1-919-468-6004
 Central Regional Sales & Service Office
 Phone: 1-972-267-9500 Fax: 1-972-267-5612
 Southwestern Regional Sales & Service Office
 Phone: 1-602-431-1412 Fax: 1-602-431-1437
 Northwest Regional Sales & Service Office
 Phone: 1-503-644-0323 Fax: 1-503-643-8108

EUROPE :
DISCO HI-TEC EUROPE GmbH
 Liebigstrasse 8 D-85551 Kirchheim b. Muenchen Germany
 Phone: 49-89-90903-0 Fax: 49-89-90903-199
DISCO HI-TEC FRANCE SARL Provence Head Office
 Phone: 33-4-42-91-00-20 Fax: 33-4-42-91-00-29
DISCO HI-TEC U.K. LTD.
 Phone: 44-1342-313165 Fax: 44-1342-313177
DISCO HI-TEC MOROCCO SARL
 Phone: 212-6-136-94-04 Fax: 212-22-97-38-88