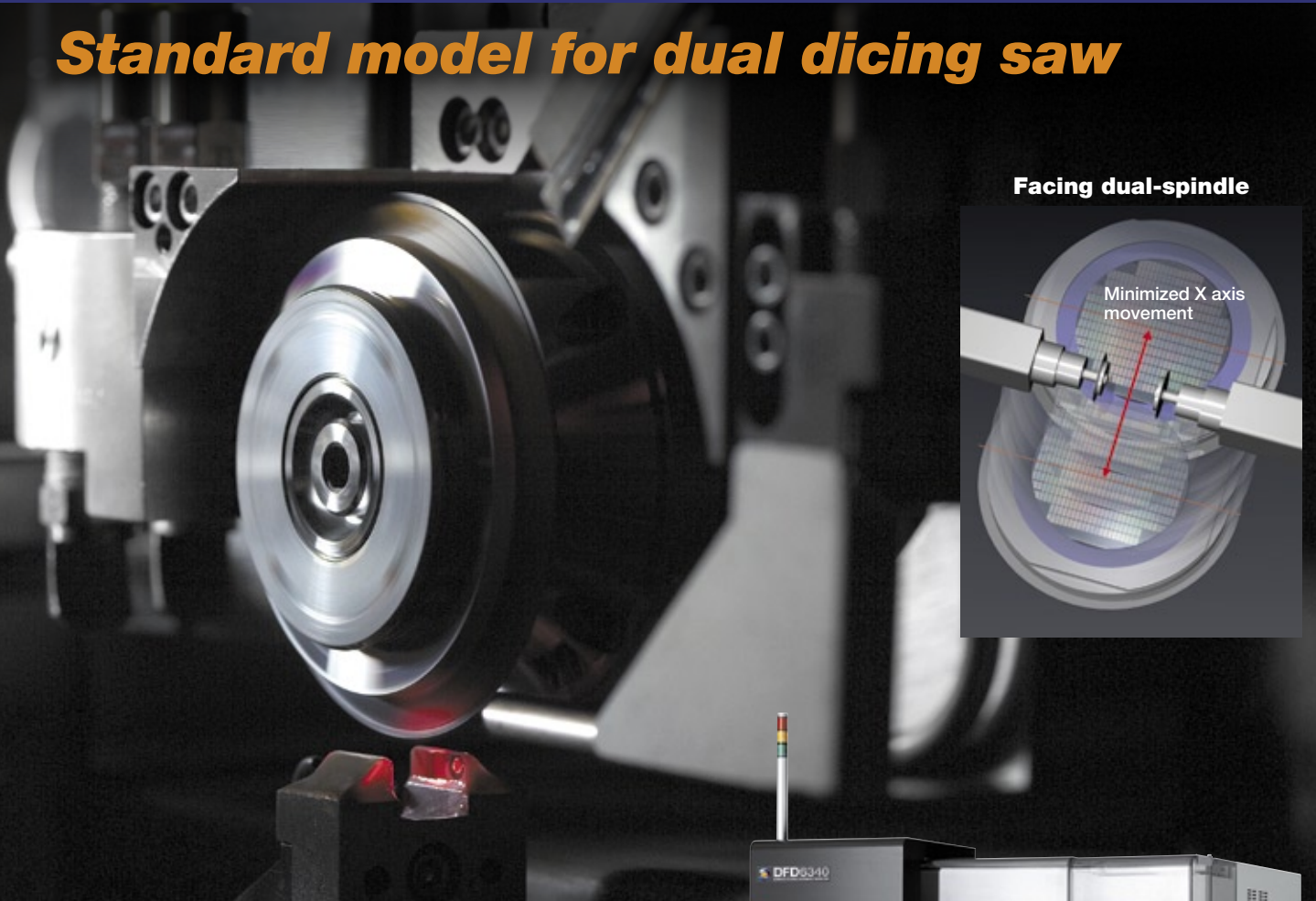


# Fully Automatic Dicing Saw DFD6340

## Standard model for dual dicing saw



Facing dual-spindle

Minimized X axis movement

### Maximized Throughput

A facing dual-spindle configuration with a shorter distance between blades improves throughput by up to 30% for step/bevel cut and 40% for dual cut when compared to parallel dual-spindle saws.

### Small Footprint

By employing a new high-rigidity, bridge-type frame structure, the DFD6340 has the smallest footprint of any 8" saw in its class.

### Lower Air and Energy Consumption

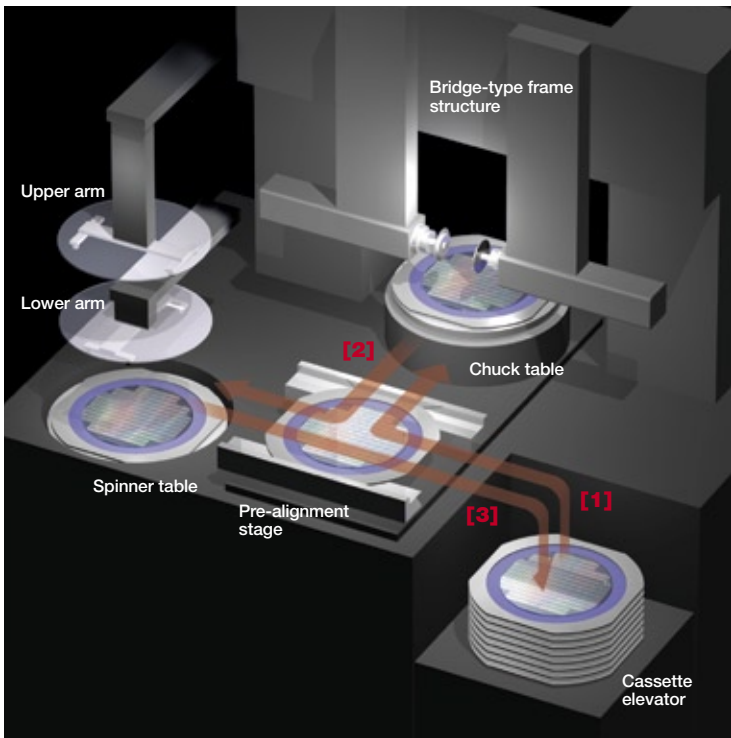
Utilizing the latest in conservation technology, the energy and air consumption of the DFD6340 has been reduced by 33% and 24% respectively when compared to the previous generation of saws.

### Easy Operation

The DFD6340 utilizes an adjustable LCD touch screen graphical user interface making operation and maintenance intuitive and easy. Also, an inspection stage allows for a wafer to be removed during saw operation.



# Fully Automatic Dicing Saw DFD6340



## DFD6340 Workpiece Flow System

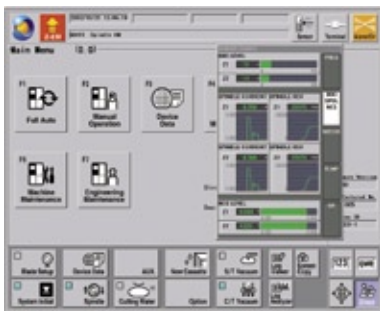
- [1] Lower arm moves workpiece from cassette to pre-alignment stage. Lower arm moves workpiece to chuck table → **cutting** →
- [2] Upper arm moves workpiece to spinner table → **cleaning & drying** →
- [3] Lower arm returns workpiece to cassette

## Cost of Ownership Improvements

- **Shorter set up time - two NCS sensors**  
Two Non-Contact Setup sensors, one each for Z1 & Z2, enable increasing throughput.
- **Shorter kerf check time - two microscopes**  
A dedicated high-magnification microscope for each spindle allows for simultaneous kerf check, which increases throughput.

## Process Stability - Cutting Water Flow Control

- Cutting water flow is controlled by the recipe.
- Water flow is consistently maintained, aiding process stability.



LCD touch screen



Adjustable LCD

17% smaller footprint

DFD651(1.58m<sup>2</sup>)

DFD6340 (1.31m<sup>2</sup>)

## DFD6340 Specifications

Workpiece Size	-	Max. ø8"
X-axis	Cutting range	mm 210
	Max. cutting speed	mm/s 600
Y1-axis and Y2-axis	Cutting range	mm 210
	Index step	mm 0.0001
	Index positioning accuracy	mm 0.002/210 (Single error)0.002 or less/5
Z1-axis and Z2-axis	Max. stroke	mm 19.22 (For ø2"blade)
	Moving resolution	mm 0.00005
	Repeatability accuracy	mm 0.001
	Max. blade size	mm ø58
θ-axis	Max. rotating angle	deg. 380
Spindle	Output	kW 1.2kW at 60,000 min <sup>-1</sup>
	Rated torque	N·m 0.19
	Revolution speed range	min <sup>-1</sup> 6,000~60,000
Applicable Tape Frame	-	2-8-1
Utilities	Power supply	-200 ~ 240 V AC±10 %, 3-phase (50/60 Hz) <small>For other than the above voltages, a transformer is necessary</small>
	Power consumption	-
	When processing	kW 2.1 (for reference)
	During warm-up	kW 1.8 (for reference)
	Max. power	kVA 6.9
	Air pressure	MPa 0.5 ~ 0.8
	Air max. consumption	L/min(ANR) 378.0
	N <sub>2</sub> Pressure	MPa 0.5 ~ 0.8
	N <sub>2</sub> Max. consumption	L/min(ANR) 216.0
	Cutting water, water curtain and other	-
	Pressure	MPa 0.2 ~ 0.4
	Max. flow rate	L/min Cutting water: 12 Water curtain: 1 Other: 1
	Cooling water	-
	Pressure	MPa 0.2~0.4
	Flow rate	L/min 3.0 at 0.3 MPa
	Exhaust duct capacity	m <sup>3</sup> /min 5.0
	Machine dimensions (W x D x H)	mm 1,180 x 1,110 x 1,850
	Machine weight	kg Approx. 1,600 (without transformer for overseas use) Approx. 1,670 (with transformer for overseas use)

## Environmental conditions

- Use clean, oil-free air at a dew point of -15 °C or less. (Use a residual oil: 0.1 ppm. Filtration rating: 0.01 μm/99.5 % or more).
- Keep room temperature fluctuations within ±1 °C of the set value. (Set value should be between 20 ~ 25 °C).
- Keep cutting water and cleaning water 2 °C above room temperature (fluctuations within ±1 °C).
- Keep spindle cooling water the same as room temperature between 20 ~ 25 °C (fluctuations within ±1 °C).
- The machines should be used in an environment, free from external vibration. Do not install machine near a ventilation opening, heat generation equipment or oil mist generating parts.
- This machine uses water. In case of water leakage, please install the machine on the floor with sufficient waterproofing and drainage treatments.
- All the pressures are described using a gauge pressure.
- The above specifications may change due to technical modifications. Please confirm when placing your order.
- For further information please contact your local sales representatives.



## DISCO CORPORATION

13-11 Omori-Kita 2-chome, Ota-ku, Tokyo 143-8580, Japan  
Tel:03-4590-1100 Fax:03-4590-1075 • www.disco.co.jp

ASIA :  
DISCO HI-TEC (SINGAPORE) PTE. LTD.  
Blk 2 Kaki Bukit Ave.1 #03-06/08 Kaki Bukit  
Industrial Estate Singapore 417938  
Phone: 65-6747-3737 Fax: 65-6745-0266  
DISCO HI-TEC (MALAYSIA) SDN. BHD.  
Penang Regional Office  
Phone: 60-3-8024-6588 Fax: 60-3-8024-1311  
DISCO HI-TEC (THAILAND) CO., LTD.  
Phone: 66-2-618-8441 Fax: 66-2-618-8440  
DISCO TECHNOLOGY (SHANGHAI) CO., LTD.  
Area E, 3rd Floor, Building A1 No.381 FuTeXiYi Road,  
WaiGaoQiao Free Trade Zone, Shanghai 200131 P.R. CHINA  
Phone: 86-21-58662516 Fax: 86-21-58662517  
Tianjin Service & Technical Support Center  
Phone: 86-022-24381973 Fax: 86-022-24381637  
Dongguan Service & Technical Support Center  
Phone: 86-769-86334981 Fax: 86-769-86334559  
Suzhou Office  
Phone: 86-512-67629081 Fax: 86-512-67629082

Chengdu Office  
Phone: 86-28-86528592 Fax: 86-28-86528591

ASIA AGENT :  
New Tronics Co., Ltd.  
Flat F, 11th Floor, Valiant Ind. Bldg. 2-12 Au Pui Wan Street,  
Fotian Shantin, N.T. HONG KONG  
Phone: 852-26871431 Fax: 852-26874283  
Happy Pole, Ltd.  
8F-1, No.41 Section 2, Roosevelt Road Taipei, Taiwan R.O.C.  
Phone: 886-2-23980651 Fax: 886-2-23943943

Aurotech Corporation  
2021 Buencamino Street Alabang, Muntinlupa PHILIPPINES  
Phone: 63-2-809-0155 Fax: 63-2-807-7419

DHK Solution Corporation  
13F, Sankok Jadan Building, 1337-31, Seocho-dong, Seocho-gu, Seoul, Korea  
Phone: 82-2-3415-1122 Fax: 82-2-3415-1441

U.S.A. :  
DISCO HI-TEC AMERICA, INC.  
3270 Scott Blvd. Santa Clara, CA 95054-3011 U.S.A.  
Phone: 1-408-987-3776 Fax: 1-408-987-3785

Eastern Regional Sales & Service Office  
Phone: 1-603-656-9019 Fax: 1-603-656-9018  
Southeastern Regional Sales & Service Office  
Phone: 1-919-468-6003 Fax: 1-919-468-6004  
Central Regional Sales & Service Office  
Phone: 1-972-267-9500 Fax: 1-972-267-5612  
Southwestern Regional Sales & Service Office  
Phone: 1-602-431-1412 Fax: 1-602-431-1437  
Northwest Regional Sales & Service Office  
Phone: 1-503-644-0323 Fax: 1-503-643-8108

EUROPE :  
DISCO HI-TEC EUROPE GmbH  
Liesbigstrasse 8 D-85551 Kirchheim b. Muenchen Germany  
Phone: 49-89-909030-0 Fax: 49-89-909030-199  
DISCO HI-TEC FRANCE SARL Provence Head Office  
Phone: 33-4-42-91-00-20 Fax: 33-4-42-91-00-29  
DISCO HI-TEC U.K. LTD.  
Phone: 44-1342-313165 Fax: 44-1342-313177  
DISCO HI-TEC MOROCCO SARL  
Phone: 212-6-136-94-04 Fax: 212-22-97-38-88