

Electroformed Bond Blades

Z05 SERIES

Ultra-High Cutting Performance for Diverse Applications



The Z05 Series offers ultra-high cutting performance for a wide range of workpieces and applications.

The Z05 Series electro-formed bond blades employ new Disco advances in materials and manufacturing process. The result is two types of ultra-high-performance blades that handle anything from hard and brittle materials to BGA, resin circuit boards, and tough device packages.

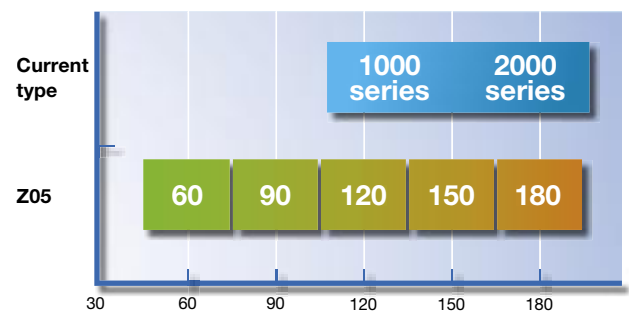
Type 1 offers multiple grit concentration levels:

- Up to 5 concentration levels provide a greater blade selection.
- In processing hard and brittle materials, process quality is improved while blade life is maintained.

Type 2 offers extra process quality:

- Blade edge retains shape for stable and consistent processing.
- Burring of metal and plastic may be prevented or reduced.

Concentration range



During dicing, grit concentration affects both the speed of blade wear and the size of chipping. By selecting precisely a grit concentration that is appropriate to the application, both wear speed and process quality can be made more stable and consistent. "Grit concentration" refers to the percentage of diamond grit in the abrasive portion of the blade. For example, a grit concentration level of 100 indicates 25% diamond grit by volume.

Applications

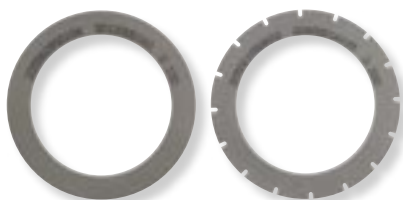
Chip LED board, Green Ceramics, Hard and brittle material, etc.



ISO 9001
JQA-0954



REGISTERED ORGANIZATION
No. E892-ISO 14001



Specifications

Electroformed Bond Blades

Z05 SERIES

Abrasive Type		Bond	
SD	Synthetic Diamond	D1	with multiple grit concentration levels
B	CBN	D1A	for higher process quality

Z05 - SD 700 - D1 - 120 54 x 0.1 A3 x 40 - L

Grit Size	Concentration	O.D.	Thickness	Thickness Accuracy	I.D.	Surface Treatment	
360	D1			A1			
400				A2			±0.005
600				A3			±0.010
700				A4			±0.015
800	D1A			AS		Optional (mm)	
1000				A5			
1200							



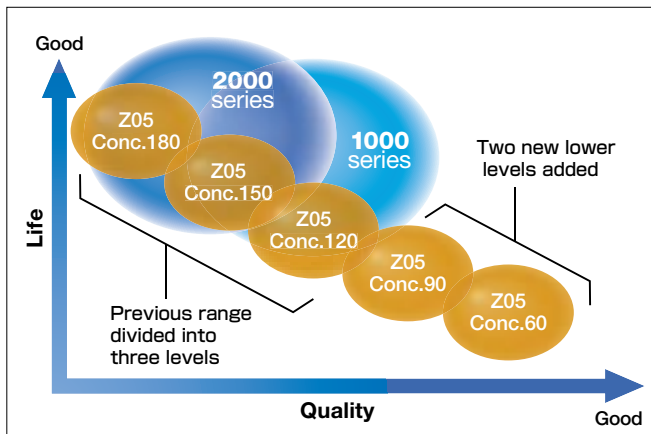
Two Blade Types for Different Needs

The Z05 Series offers two blade types for different needs and applications:

Z05 SERIES

Type 1 with multiple grit concentration levels(D1 bond)

In contrast to previous blades, which offered 2 concentration levels, standard and low level, the Z05 Series offers up to 5 concentration levels in a range that is both wider (includes lower levels than previously offered) and more finely divided.

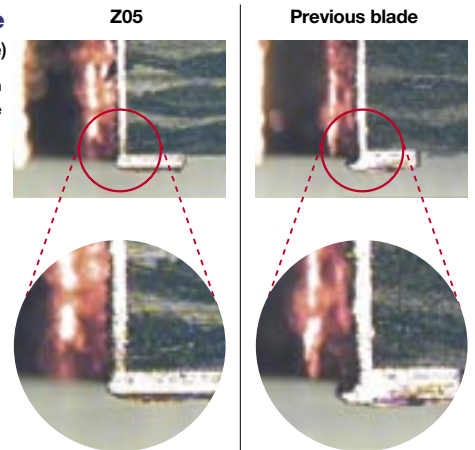


Type 2 for higher process quality(D1A bond)

Compared to previous products, it can sustain a stable edge because the change in shape of the blade tip is controlled.

Cutting example Burring (through-hole)

Using the Z05 Series can result in reduced electrode and resin burring.



When ordering

Please contact a Disco representative with your product needs such as type, thickness, outer and inner diameter, and quantity.

When you place the first order with us, please explain application information such as materials to cut or grind, sizes, shape, machine, type, and other specification.

We are ready to help you to determine which is our most appropriate product type for your application.

Due to improvements in our products, it is possible that product specifications may be changed without advanced notice. Please confirm the product specifications with a Disco representative.

To use these Disco wheels safely...

Please read carefully and follow the instructions below to prevent any accidents or injuries.

- USE a safety cover (nozzle case, cover), equipped as a standard accessory, to avoid injury.
- DO NOT EXCEED the maximum rpm if it is specified.
- FOLLOW the instruction manual of the machine to mount wheel properly.
- DO NOT DROP OR HIT wheels. This may cause wheel breakage or injury.
- Always CHECK the wheel for chipping or any other wheel damage before starting to use the wheel. DO NOT USE the wheel if there is any damage.
- READ the operation manual of the cutting/ grinding equipment before use.
- DO NOT USE a wheel with a modified or customized equipment.
- DO NOT USE a wheel that has a different size from the one recommended for your machine.
- DO NOT USE a wheel for any other purpose than Grinding, Cutting, or Polishing.
- Always USE water or coolant to prevent wheel breakage.

DISCO



ASIA :
DISCO HI-TEC (SINGAPORE) PTE., LTD.
 Blk 2 Kaki Bukit Ave.1 #03-06/08 Kaki Bukit Industrial Estate Singapore 417938
 Phone: 65-6747-3737 Fax: 65-6745-0266
DISCO HI-TEC (MALAYSIA) SDN. BHD.
 Phone: 60-3-8024-6588 Fax: 60-3-8024-1311
 Penang Regional Office
 Phone: 60-4-644-5502 Fax: 60-4-645-2285
DISCO HI-TEC (THAILAND) CO., LTD.
 Phone: 66-2-618-8441 Fax: 66-2-618-8440
DISCO TECHNOLOGY (SHANGHAI) CO., LTD.
 Area E, 3rd Floor, Building A1 No.381 FuTeXiYi Road, WaGaoQiao Free Trade Zone, Shanghai 200131 P.R. CHINA
 Phone: 86-21-58662516 Fax: 86-21-58662517
 Tianjin Service & Technical Support Center
 Phone: 86-022-24381973 Fax: 86-022-24381637
 Dongguan Service & Technical Support Center
 Phone: 86-769-86334981 Fax: 86-769-86334559
 Suzhou Office
 Phone: 86-512-67629081 Fax: 86-512-67629082

DISCO CORPORATION

13-11 Omori-Kita 2-chome, Ota-ku, Tokyo 143-8580, Japan
 Tel:03-4590-1100 Fax:03-4590-1075 • www.disco.co.jp

Chengdu Office
 Phone: 86-28-86528592 Fax: 86-28-86528591

ASIA AGENT :
New Tronics Co., Ltd.
 Flat F, 11th Floor, Valiant Ind. Bldg. 2-12 Au Pui Wan Street, Fotan Shantin, N.T. HONG KONG
 Phone: 852-26871431 Fax: 852-26874283
Happy Pole, Ltd.
 8F-1, No.41 Section 2, Roosevelt Road Taipei, Taiwan R.O.C.
 Phone: 886-2-23980651 Fax: 886-2-23943943

Aurotech Corporation
 2021 Buencamino Street Alabang, Muntinlupa PHILIPPINES
 Phone: 63-2-809-0155 Fax: 63-2-807-7419
DHK Solution Corporation
 13F, Sanhak Jaedan Building 1337-31, Seocho-dong, Seocho-gu, Seoul, Korea
 Phone: 82-2-3415-1122 Fax: 82-2-3415-1441

U.S.A. :
DISCO HI-TEC AMERICA, INC.
 3270 Scott Blvd., Santa Clara, CA 95054-3011 U.S.A.
 Phone: 1-408-987-3776 Fax: 1-408-987-3785

Eastern Regional Sales & Service Office
 Phone: 1-603-658-9019 Fax: 1-603-658-9018
 Southeastern Regional Sales & Service Office
 Phone: 1-919-468-6003 Fax: 1-919-468-6004
 Central Regional Sales & Service Office
 Phone: 1-972-267-9500 Fax: 1-972-267-5612
 Southwestern Regional Sales & Service Office
 Phone: 1-602-431-1412 Fax: 1-602-431-1437
 Northwest Regional Sales & Service Office
 Phone: 1-503-644-0323 Fax: 1-503-643-8108

EUROPE :
DISCO HI-TEC EUROPE GmbH
 Liebigstrasse 8 D-85551 Kirchheim b. Muenchen Germany
 Phone: 49-89-90903-0 Fax: 49-89-90903-199
DISCO HI-TEC FRANCE SARL Provence Head Office
 Phone: 33-4-42-91-00-20 Fax: 33-4-42-91-00-29
DISCO HI-TEC U.K. LTD.
 Phone: 44-1342-313165 Fax: 44-1342-313177
DISCO HI-TEC MOROCCO SARL
 Phone: 212-6-136-94-04 Fax: 212-22-97-38-88